



People. Partnership. Performance.

P.O. Box 1837
Tacoma, WA 98401-1837
www.portoftacoma.com

June 15, 2016

TO: PLANHOLDERS

SUBJECT: PCT TRUCK STAGING PROJECT
PROJECT NO. 091606
CONTRACT NO. 070287

ADDENDUM NUMBER ONE

This addendum is issued to amend the following:

BIDDING DOCUMENTS

A. SECTION 00 41 00 - BID FORM

1. **DELETE** and **REPLACE** the issued Section 00 41 00 - Bid Form with the attached, revised Section 00 41 00 - Bid Form (Attachment A). (Adding Item No. 16 for work in municipal road/street)

SPECIFICATIONS

A. SECTION 01 20 00 - PRICE AND PAYMENT PROCEDURES

1. **DELETE** and **REPLACE** the issued Section 01 20 00 - Price and Payment Procedures with the attached, revised Section 01 20 00 - Price and Payment Procedures (Attachment B).

B. DUPLICATE SECTIONS - DIVISION 01 - GENERAL REQUIREMENTS

1. **DELETE** extra Division 01 Sections (Project Manual pages 146 - 204 of the Issued Bid Documents)

DRAWINGS

A. DRAWING E1.0 - PARTIAL ELECTRICAL SITE PLAN - AREA 1

1. **DELETE** and **REPLACE** the issued E1.0 (Sheet 38) with the attached, revised Drawing E1.0 (Attachment C).

B. DRAWING E1.1 - PARTIAL ELECTRICAL SITE PLAN - AREA A

1. **DELETE** and **REPLACE** the issued E1.1 (Sheet 39) with the attached, revised Drawing E1.1 (Attachment D).

C. DRAWING E2.0 - PCT GATE ELECTRICAL DETAILS

1. **DELETE** and **REPLACE** the issued E2.0 (Sheet 40) with the attached, revised Drawing E2.0 (Attachment E).

D. DRAWING E3.0 - PORTAC GATE ELECTRICAL DETAILS

1. **DELETE** and **REPLACE** the issued E3.0 (Sheet 41) with the attached, revised Drawing E3.0 (Attachment F).

Receipt for this addendum shall be indicated in the space provided in Section 00 41 00, Bid Form.

END OF SECTION

ATTACHMENT A – Revised Section 00 41 00 - Bid Form
ATTACHMENT B – Revised Section 01 20 00 - Price and Payment Procedures
ATTACHMENT C – Revised E1.0 - Partial Electrical Site Plan - Area 1
ATTACHMENT D – Revised E1.1 - Partial Electrical Site Plan - Area A
ATTACHMENT E – Revised E2.0 - PCT Gate Electrical Details
ATTACHMENT F – Revised E3.0 - Portac Gate Electrical Details

BIDDER'S NAME: _____

PROJECT TITLE: **PCT TRUCK STAGING**

The undersigned Bidder declares that it has read the specifications, understands the conditions, has examined the site, and has determined for itself all situations affecting the work herein bid upon. Bidder proposes and agrees, if this bid is accepted, to provide at Bidder's own expense, all labor, machinery, tools, materials, etc., including all work incidental to, or described or implied as incidental to such items, according to the bidding documents, and that the Bidder will complete the work within the time stated, and that Bidder will accept in full payment therefore the lump sums and unit prices set forth below.

Proposed Bid Price. (Note: Show prices in figures only.) Complete Installation:

ITEM NO.	DESCRIPTION OF ITEM	QTY	UOM	UNIT PRICE	EXTENDED PRICE
1	PCT Staging Project - All Other Work	1	LS		
2	Portac Project - All Other Work	1	LS		
3	Chain Link Fence, 8-Ft PVC Coated Standard - PCT	3,075	LF		
4	Chain Link Fence, 8-Ft PVC Coated Standard - Portac	830	LF		
5	Chain Link Fence, 8-Ft PVC Coated Sloped Condition - Portac	3,620	LF		
6	Chain Link Fence, 8-Ft PVC Coated Bolted Condition - Portac	730	LF		
7	Manual Chain Link Double Swing Gate, 24 Ft - PCT	1	LS		
8	Manual Chain Link Rolling Gate, 30 Ft - PCT	1	LS		
9	Manual Chain Link Rolling Gate, 17 Ft - PCT	1	LS		
10	Motorized Chain Link Gate With Card Readers, 24 Ft - PCT	1	LS		
11	Manual Chain Link Swing Gate, 12ft - PCT	1	LS		
12	Manual Chain Link Swing Gate, 24 Ft - Portac	1	LS		
13	Motorized Chain Link Gate With Card Reader, 20 Ft - Portac	1	LS		
14	Asphalt Class 1/2" Pg 70-22 - PCT	9,050	TON		
15	Stormwater and Utility Improvements - PCT	1	LS		
SUBTOTAL FOR ITEMS 1- 15					

ITEM NO.	DESCRIPTION OF ITEM	QTY	UOM	UNIT PRICE	EXTENDED PRICE
<u>16</u>	<u>Work Order Items - Complete (Tax Rule 171 - Municipal Road / Street)</u>	<u>1</u>	<u>LS</u>		
SUBTOTAL FOR ITEM 16					
BASE BID SUBTOTAL (1-15 + 16)					

Evaluation of Bids. In accordance with the provisions of these Contract Documents, Bids will be evaluated to determine the lowest Base Bid Subtotal offered by a responsible Bidder submitting a responsive bid.

Addenda. Bidder acknowledges review of all Addenda through No. _____

Trench Excavation Safety Provision. If the bid amount contains work which requires trenching exceeding a depth of 4 feet, all costs for trench safety shall be included in the Base Bid and indicated below for adequate trench safety systems in compliance with RCW 39.04 and WAC 296-155-650. Bidder shall include a lump sum amount, excluding Washington State Sales Tax. If trench excavation safety provisions do not pertain to the Work, the Bidder should enter "N.A." or "Not Applicable" in the blank on the Bid Form.

Trench Excavation Safety: _____ (Total in Written Figures Only)

Principal Subcontractors/Suppliers. The bidder shall list below the name of each subcontractor or supplier to whom the bidder proposes to subcontract the portions of the work listed below, or name itself for the work.

Work to be Performed	Name of Firm
HVAC (Heating, Ventilation and Air Conditioning) Work	
Plumbing Work as described in RCW 18.106	
Electrical Work as described in RCW 19.28	

[Remainder of Page Left Intentionally Blank; Signature Page Immediately Follows]

Noncollusion. The undersigned declares under penalty of perjury that the bid submitted is a genuine and not a sham or collusive bid, or made in the interest or on behalf of any person or firm not therein named; and further says that the said bidder has not directly or indirectly induced or solicited any bidder on the above work or supplies to put in a sham bid, or any other person or corporation to refrain from bidding; and that said bidder has not in any manner sought by collusion to secure to the bidder an advantage over any other bidder or bidder.

Name of Firm

Date

Signature

Print Name, Title

Mailing Address

City, State, Zip Code

Telephone Number

Email Address

WA State Contractor's License No.

Date of Issue

Expiration Date

Unified Business Identifier (UBI) No.

Employment Security Department No.

Identification of Contractor as a sole proprietor, a partnership, a joint venture, a corporation or another described form of legal entity

END OF SECTION

PART 1 - GENERAL

1.01 RELATED WORK DESCRIBED ELSEWHERE

- A. The provisions and intent of the Contract, including the General and Supplemental Conditions apply to this work as if specified in this section. Work related to this section is described throughout these Specifications.
- B. Individual submittals are required in accordance with the pertinent sections of these Specifications

1.02 PAYMENT PROCEDURES

- A. Monthly pay estimates shall clearly identify the work performed for the given time period based on the approved Schedule of Values.
 - 1. At the Pre-construction meeting, the Engineer and the Contractor shall agree upon a date each month when payment applications shall be submitted.
- B. Prior to submitting a payment application, the Contractor and Engineer shall meet each month to review the work accomplished to determine the actual quantities including labor, materials and equipment charges to be billed.
 - 1. Prior to the payment application meeting, the Contractor shall submit to the Engineer all measurement documentation as referenced in these contract documents; to include all measurement by weight, volume or field.
 - 2. For all change work being done on a force account basis, the Contractor shall submit prior to meeting with Engineer all Force Account back-up documentation as required to process the payment application where Force Account work is being billed. The Engineer and the Contractor shall review the documentation at the payment application meeting to verify quantities and review the work accomplished.
 - 3. The Contractor shall bring a copy of all documentation to the pay application meeting with the Engineer.
- C. Following the Engineers' review, the Contractor shall prepare an original pay estimate, in a form approved by the Port or with the Port's supplied form, signed and complete with all supporting documentation attached and submit it electronically using Adobe PDF file format to cpinvoices@portoftacoma.com.
 - 1. With each payment application, the Contractor shall submit a list of all subcontractors (at all tiers) and suppliers on the Port supplied form.
 - 2. An estimated cashflow statement projecting the Contractor's monthly billings on the project shall be submitted with each payment application.

1.03 PAYMENT PRICING

- A. Pricing for the various lump sum or unit prices in the Bid Form, as further specified herein, shall include all compensation to be received by the Contractor for furnishing all tools, equipment, supplies, and manufactured articles, and for all labor, operations, and incidentals appurtenant to the items of work being described, as necessary to complete the various items of the work in accordance with the requirements of the Contract Documents.
- B. Pricing also includes all costs of compliance with the regulations of public agencies having jurisdiction, including safety and health requirements of the Occupational Safety and Health Administration of the U.S. Department of Labor (OSHA).

- C. No separate payment will be made for any item that is not specifically set forth in the Bid Form, and all costs therefore shall be included in the prices named in the Bid Form for the various appurtenant items of work.
- D. All other work not specifically mentioned in the measurement and payment sections identified below shall be considered incidental to the work performed and merged into the various unit and lump sum prices bid. Payment for work under one item will not be paid for under any other item.
- E. The Port of Tacoma reserves the right to make changes should unforeseen conditions necessitate such changes. Where work is on a unit price basis, the actual quantities occasioned by such changes shall govern the compensation.

1.04 LUMP-SUM MEASUREMENT

- A. Lump-sum measurement will be for the entire item, unit of Work, structure, or combination thereof, as specified and as indicated in the Contractor's submitted bid.
 - 1. If the Contractor requests progress payments for lump-sum items, such progress payments will be made in accordance with an approved schedule of values. The quantity for payment for completed work shall be an estimated percentage of the lump sum amount, agreed to between the Engineer and Contractor, payable in monthly progress payments in increments proportional to the work performed in amounts as agreed between the Engineer and the Contractor.

1.05 REJECTED, EXCESS, OR WASTED MATERIALS

- A. Quantities of material wasted or disposed of in a manner not called for under the Contract; rejected loads of material, including material rejected after it has been placed by reasons of the failure of the Contractor to conform to the provisions of the Contract; material not unloaded from the transporting vehicle; material placed outside the lines indicated on the Contract Drawings or established by the Engineer; or material remaining on hand after completion of the Work, will not be paid for, and such quantities shall not be included in the final total quantities. No additional compensation will be permitted for loading, hauling, and disposing of rejected material.

1.06 MEASUREMENT AND PAYMENT

- A. Item #1: PCT STAGING PROJECT - ALL OTHER WORK
 - 1. Item Description: The Work of this item includes all labor, materials, tools, equipment and incidentals necessary to construct the project including demolition of the existing fence shown on the Portac plans, clearing and grubbing, striping, bollards, shaker wire conduit, survey and work that is shown on the PCT Staging plans that is not specifically identified on or included in other bid items described in this section.
 - 2. Measurement: This item will be measured based on a percentage complete for the overall lump sum amount.
 - 3. Payment: PCT STAGING PROJECT - ALL OTHER WORK will be paid for at the Contract lump sum price as specified in the Contractor's submitted bid, in accordance with the approved Schedule of Values.

B. Item #2: PORTAC PROJECT - ALL OTHER WORK

1. Item Description: The Work of this item includes all labor, materials, tools, equipment and incidentals necessary to construct the project including demolition of the existing fence shown on the Portac plans, clearing and grubbing, striping, bollards, shaker wire conduit, survey and work that is shown on the PORTAC plans that is not specifically identified on or included in other bid items described in this section.
2. Measurement: This item will be measured based on a percentage complete for the overall lump sum amount.
3. Payment: PORTAC PROJECT - ALL OTHER WORK will be paid for at the Contract lump sum price as specified in the Contractor's submitted bid, in accordance with the approved Schedule of Values.

C. Item #3 THROUGH 4: CHAIN LINK FENCE, 8-FT PVC COATED STANDARD

1. Item Description: The Work of this item includes all labor, materials, tools, equipment and incidentals for the installation of the chain link fence for the PCT and Portac plans respectively as per detail 1 on drawing C5.1.
2. Measurement: This item will be measured by the linear foot of chain link fence installed.
3. Payment: CHAIN LINK FENCE, 8-FT PVC COATED STANDARD will be paid for at the unit price based on actual quantities for the period being billed.

D. Item #5: CHAIN LINK FENCE, 8-FT PVC COATED SLOPED CONDITION - PORTAC.

1. Item Description: The Work of this item includes all labor, materials, tools, equipment and incidentals necessary for the installation of the chain link fence as per detail 1 on drawing C5.1.
2. Measurement: This item will be measured by the linear foot of chain link fence installed.
3. Payment: CHAIN LINK FENCE, 8-FT PVC COATED SLOPED CONDITION - PORTAC will be paid for at the unit price based on actual quantities for the period being billed.

E. Item #6: CHAIN LINK FENCE, 8-FT PVC COATED BOLTED CONDITION - PORTAC.

1. Item Description: The Work of this item includes all labor, materials, tools, equipment and incidentals necessary for the installation of the chain link fence as per detail 3 on drawing C12.3.
2. Measurement: This item will be measured by the linear foot of chain link fence installed.
3. Payment: CHAIN LINK FENCE, 8-FT PVC COATED BOLTED CONDITION - PORTAC will be paid for at the unit price based on actual quantities for the period being billed.

F. Item #7: MANUAL CHAIN LINK DOUBLE SWING GATE, 24 FT - PCT.

1. Item Description: The Work of this item includes all labor, materials, tools, equipment and incidentals necessary for the installation of the gate as per detail 1 on drawing C5.3.
2. Measurement: This item will be measured as a lump sum unit.
3. Payment: MANUAL CHAIN LINK DOUBLE SWING GATE, 24 FT - PCT will be paid for at the Contract lump sum price as specified in the Contractor's submitted bid, in accordance with the approved Schedule of Values. Incremental payment for completed work shall be a percentage, determined by the Engineer, payable in monthly progress payments, proportional to the work completed.

G. Item #8: MANUAL CHAIN LINK ROLLING GATE, 30 FT - PCT.

1. Item Description: The Work of this item includes all labor, materials, tools, equipment and incidentals necessary for the installation of the gate as per detail 2 on drawing C5.3.
2. Measurement: This item will be measured as a lump sum unit.
3. Payment: MANUAL CHAIN LINK ROLLING GATE, 30 FT - PCT will be paid for at the Contract lump sum price as specified in the Contractor's submitted bid, in accordance with the approved Schedule of Values. Incremental payment for completed work shall be a percentage, determined by the Engineer, payable in monthly progress payments, proportional to the work completed.

H. Item #9: MANUAL CHAIN LINK ROLLING GATE, 17 FT - PCT.

1. Item Description: The Work of this item includes all labor, materials, tools, equipment and incidentals necessary for the installation of the gate as per detail 2 on drawing C5.3.
2. Measurement: This item will be measured as a lump sum unit.
3. Payment: MANUAL CHAIN LINK ROLLING GATE, 17 FT - PCT will be paid for at the Contract lump sum price as specified in the Contractor's submitted bid, in accordance with the approved Schedule of Values. Incremental payment for completed work shall be a percentage, determined by the Engineer, payable in monthly progress payments, proportional to the work completed.

I. Item #10: MOTORIZED CHAIN LINK GATE WITH CARD READERS, 24 FT - PCT

1. Item Description: The Work of this item includes all labor, materials, tools, equipment and incidentals necessary for the installation of the gate as per detail 3 on drawing C5.3.
2. Measurement: This item will be measured as a lump sum unit.
3. Payment: MOTORIZED CHAIN LINK GATE WITH CARD READERS, 24 FT - PCT will be paid for at the Contract lump sum price as specified in the Contractor's submitted bid, in accordance with the approved Schedule of Values. Incremental payment for completed work shall be a percentage, determined by the Engineer, payable in monthly progress payments, proportional to the work completed.

J. Item #11: MANUAL CHAIN LINK SWING GATE, 12 FT - PCT

1. Item Description: The Work of this item includes all labor, materials, tools, equipment and incidentals necessary for the installation of the gate as per detail 3 on drawing C5.2.
2. Measurement: This item will be measured as a lump sum unit.
3. Payment: MANUAL CHAIN LINK SWING GATE, 12 FT - PCT will be paid for at the Contract lump sum price as specified in the Contractor's submitted bid, in accordance with the approved Schedule of Values. Incremental payment for completed work shall be a percentage, determined by the Engineer, payable in monthly progress payments, proportional to the work completed.

K. Item #12: MANUAL CHAIN LINK SWING GATE, 24 FT - PORTAC

1. Item Description: The Work of this item includes all labor, materials, tools, equipment and incidentals necessary for the installation of the gate as per detail 4 on drawing C12.3.
2. Measurement: This item will be measured as a lump sum unit.

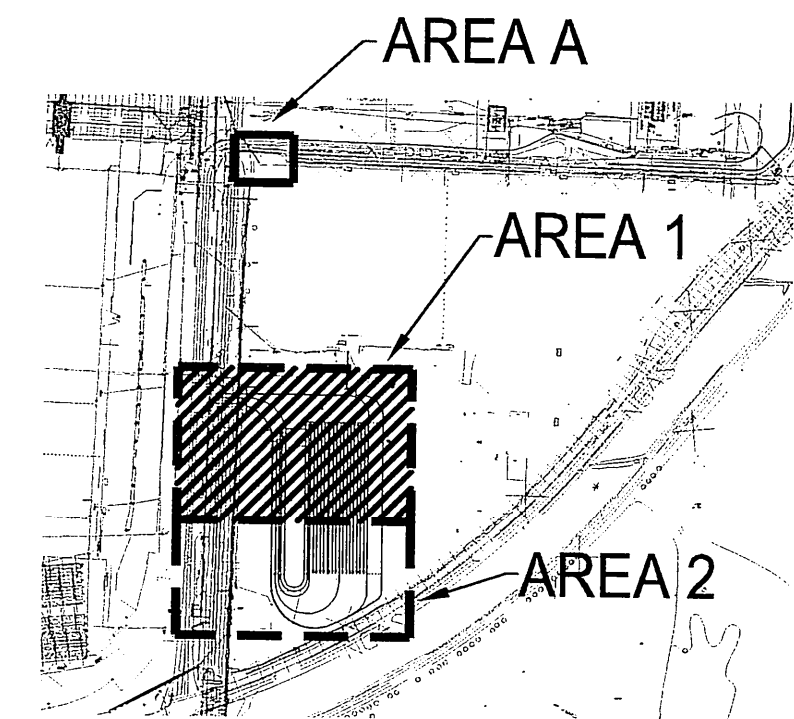
3. Payment: MANUAL CHAIN LINK SWING GATE, 12 FT - PORTAC will be paid for at the Contract lump sum price as specified in the Contractor's submitted bid, in accordance with the approved Schedule of Values. Incremental payment for completed work shall be a percentage, determined by the Engineer, payable in monthly progress payments, proportional to the work completed.
- L. Item #13: MOTORIZED CHAIN LINK GATE WITH CARD READER, 20 FT - PORTAC
1. Item Description: The Work of this item includes all labor, materials, tools, equipment and incidentals necessary for the installation of the gate as per detail 1 on drawing C12.3.
 2. Measurement: This item will be measured as a lump sum unit.
 3. Payment: MOTORIZED CHAIN LINK GATE WITH CARD READER, 20 FT - PORTAC will be paid for at the Contract lump sum price as specified in the Contractor's submitted bid, in accordance with the approved Schedule of Values. Incremental payment for completed work shall be a percentage, determined by the Engineer, payable in monthly progress payments, proportional to the work completed.
- M. Item #14: ASPHALT CLASS 1/2" PG 70-22 - PCT
1. Item Description: The Work of this item includes all labor, materials, tools, equipment associated with the preparation of grade, tack coat, joint seal, street sweeping, and the preparing, furnishing, hauling, placing, spreading, and compacting of the material.
 2. Measurement: This item will be measured by the TON of furnished and accepted material calculated from certified weigh tickets and delivery slips collected on site by the Engineer.
 3. Payment: ASPHALT CLASS 1/2" PG 70-22 - PCT will be paid for at the unit price indicated on the bid form and on actual quantities for the period being billed.
- N. Item #15: STORMWATER AND UTILITY IMPROVEMENTS - PCT
1. Item Description: The Work of this item includes all labor, materials, tools, equipment associated with the installation, dewatering, trenching and backfilling, shoring and underpinning, electrical site work, storm drainage utilities, and storm water treatment work as indicated on the drawings.
 2. Measurement: This item will be measured as a lump sum unit.
 3. Payment: STORMWATER AND UTILITY IMPROVEMENTS - PCT will be paid for at the Contract lump sum price as specified in the Contractor's submitted bid, in accordance with the approved Schedule of Values. Incremental payment for completed work shall be a percentage, determined by the Engineer, payable in monthly progress payments, proportional to the work completed.
- O. Item #16: WORK ORDER ITEMS - COMPLETE
1. Item Description: The Work of this item includes all labor, materials, tools, equipment associated with the removal of traffic markings, installation of straw wattles, installation of traffic markings, traffic control items, base course, asphalt grinding, and placement of asphalt as indicated on the Work Order drawings.
 2. Measurement: This item will be measured as a lump sum unit.

3. Payment: WORK ORDER ITEMS - COMPLETE will be paid for at the Contract lump sum price as specified in the Contractor's submitted bid, in accordance with the approved Schedule of Values. Incremental payment for completed work shall be a percentage, determined by the Engineer, payable in monthly progress payments, proportional to the work completed.

PART 2 - PRODUCTS - NOT USED

PART 3 - EXEUTION - NOT USED

END OF SECTION

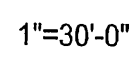


ELECTRICAL NOTES:


1. CONTRACTOR SHALL DISCONNECT EXISTING POWER CIRCUIT FROM LIGHT POLE. REMOVE EXISTING DISCONNECT, LIGHTING CONTRACTOR AND LIGHT FIXTURES.
2. NEW 95'-0", 80'-0" ABOVE GRADE, CLASS 2, DOUGLAS FIR, PENTA TREATED, WOOD LIGHT POLE. CONTRACTOR SHALL PROVIDE NEW 30A, 480V, 3PH, FUSED DISCONNECT AND CONNECT TO NEW CONDUIT AND CONDUCTORS. REINSTALL EXISTING LIGHTING CONTRACTOR AND PHOTOCELL ON NEW WOOD POLE. CONNECT TO EIGHT(8) NEW LIGHT FIXTURES MOUNTED ON POLE.
3. CONTRACTOR SHALL INTERCEPT EXISTING CONDUIT AT EXISTING LIGHT POLE LOCATION AND EXTEND INTO NEW HANDHOLE. PROVIDE WATERTIGHT SPLICE OF EXISTING AND NEW CONDUCTORS IN HANDHOLE.
4. EXISTING TACOMA POWER UTILITY POLE WITH NEW POLE MOUNTED TRANSFORMER TO SERVE NEW GATE ELECTRICAL SERVICE. PROVIDE CONDUIT POLE RISER AT EXISTING UTILITY POLE PER TACOMA POWER STANDARDS AND REQUIREMENTS. CONTRACTOR SHALL CLEAR BRUSH OUT AROUND UTILITY POLE FOR INSTALLATION OF CONDUIT AND 223 SSB VAULT.

IF SHEET IS LESS THAN 22" x 34" IT IS A
REDUCED SET

SCALE: 1" = 30'-0"

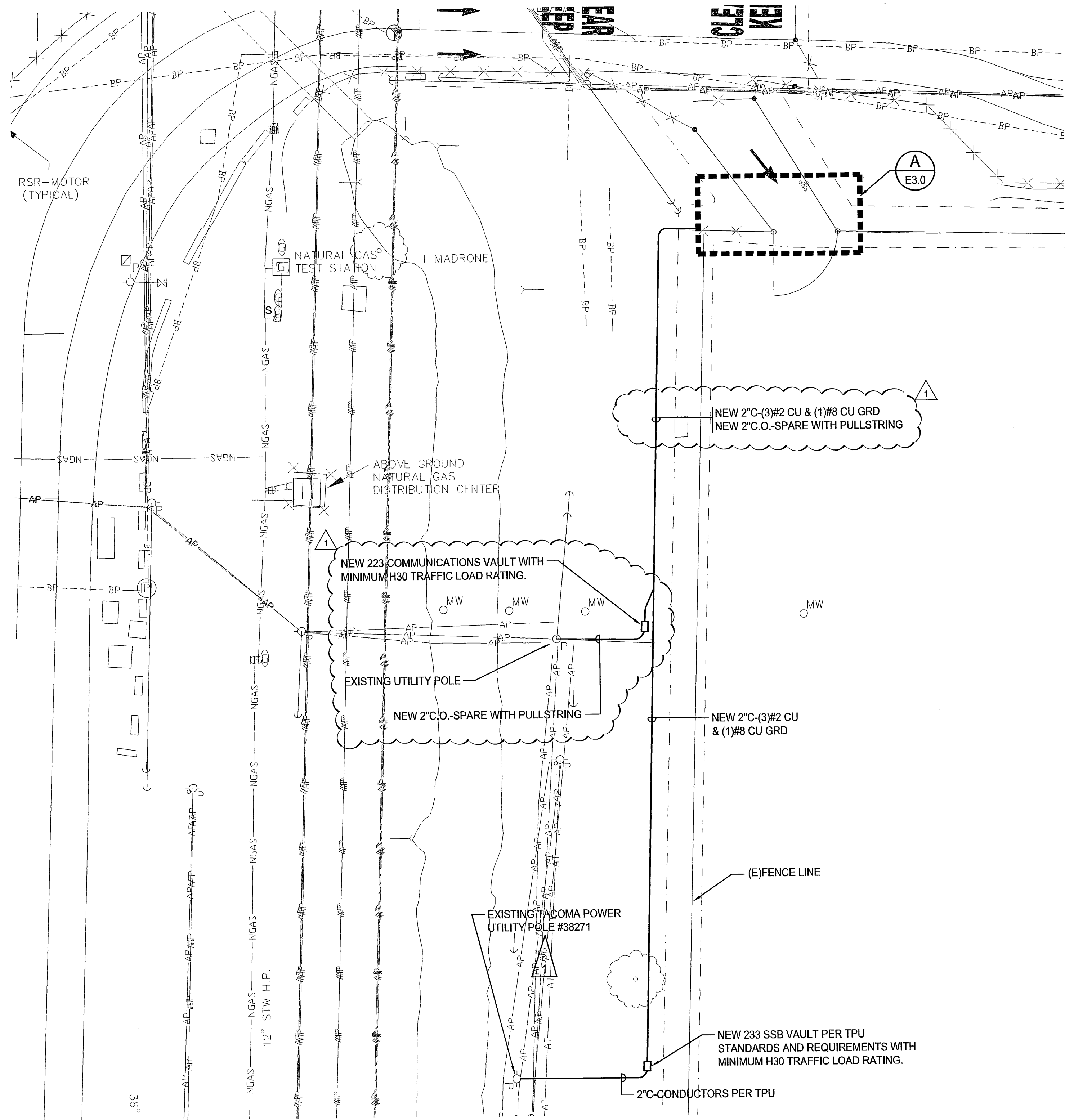


1"=30'-0"

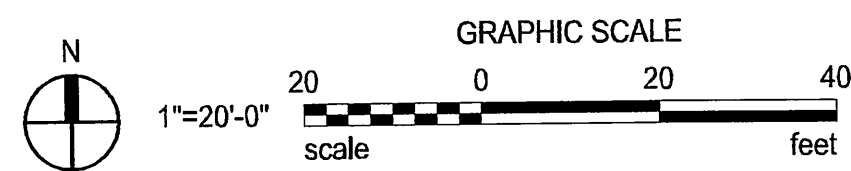


scale feet

THIS DRAWING IS THE PROPERTY OF THE PORT OF TACOMA AND SHALL NOT BE USED ON OTHER WORK, DISCLOSED, COPIED, IN WHOLE OR IN PART, WITHOUT WRITTEN PERMISSION



PARTIAL ELECTRICAL SITE PLAN
SCALE: 1" = 20'-0"

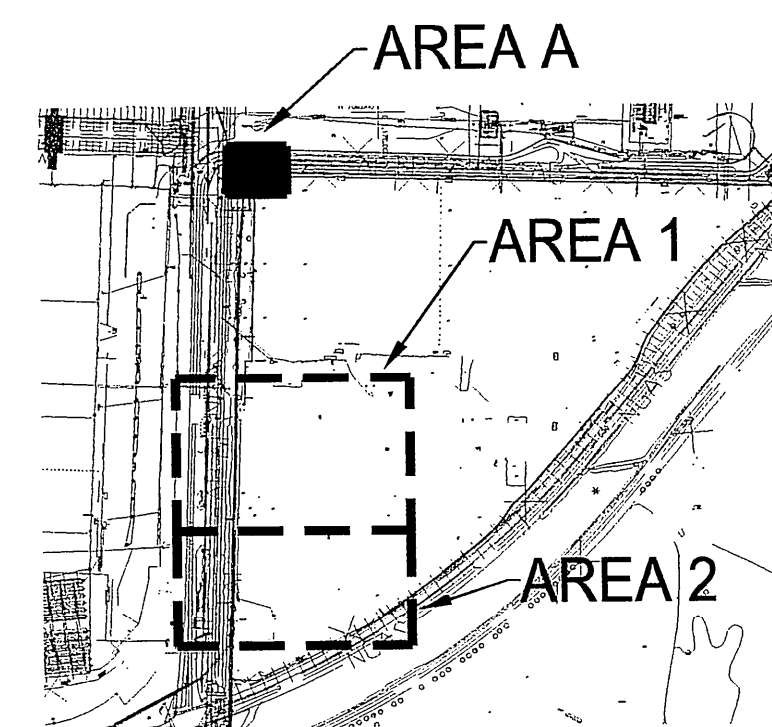


GENERAL NOTES:

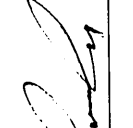
1. ALL UNDERGROUND CONDUIT SHALL BE SCHEDULE 80 PVC. ALL EXPOSED ABOVE GRADE CONDUIT SHALL BE PVC COATED RIGID STEEL.
2. METALLIC CONDUITS, COUPLINGS AND JOINTS OF METALLIC CONDUITS EMBEDDED IN CONCRETE, CDF, EARTH OR ASPHALT SHALL BE 1/2 LAP TAPED OR OTHERWISE MADE WATERTIGHT TO PREVENT INTRUSION OF MORTAR, WATER OR OTHER MATERIALS.
3. ALL CONDUIT SHOWN IS BELOW GRADE UNLESS NOTED OTHERWISE. SEE DETAIL B, E2.0 FOR TRENCHING REQUIREMENTS.
4. STORM DRAIN MANHOLES, ELECTRICAL/COMMUNICATION VAULTS, AND CATCH BASINS SHALL BE DESIGNED AND CONSTRUCTED WITH FLAT SLAB TOPS AND SHALL BE CONFIGURED TO ACCEPT FUTURE ADDITION OF A MINIMUM 4" RISER SECTION BETWEEN LID OR GRATE OR TOP OF STRUCTURE.

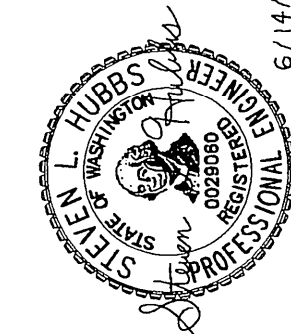
ELECTRICAL NOTES:

1. EXISTING TACOMA POWER UTILITY POLE WITH NEW POLE MOUNTED TRANSFORMER TO SERVE NEW GATE ELECTRICAL SERVICE. PROVIDE CONDUIT POLE RISER AT EXISTING UTILITY POLE PER TACOMA POWER STANDARDS AND REQUIREMENTS. CONTRACTOR SHALL CLEAR BRUSH OUT AROUND UTILITY POLE FOR INSTALLATION OF CONDUIT AND 223 SSB VAULT.

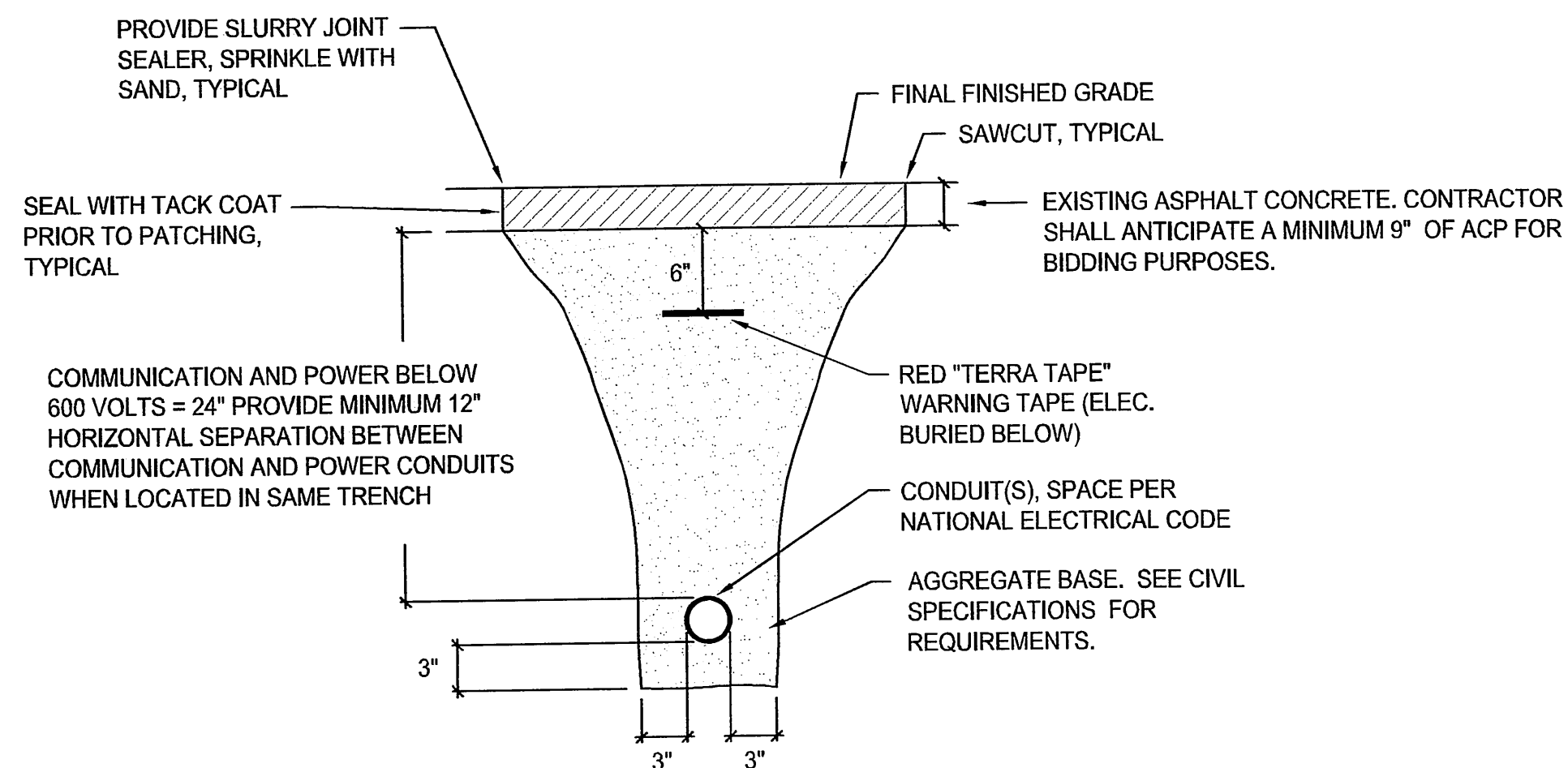


IF SHEET IS LESS THAN 22" x 34" IT IS A REDUCED SET

6556 E1.1 SHEET 39 OF 53	PCT TRUCK STAGING		PORTAC PARTIAL ELECTRICAL SITE PLAN - AREA A	
	CONT/CONS: 07/0287	TOWNSHIP: 20N	RANGE: 03E	SECTION: 01
M. ID:	DATE: HRZ:	DATE: HRZ:	DATE: HRZ:	DATE: HRZ:
PHASE: BID	PARCEL: 5000350150	VERT:	DRAWING SCALE: AS NOTED	AS NOTED
APPROVED: 		SLH	05/23/2016	CHECKED BY DATE
DIRECTOR ENG. DATE: 6/15/16		GLW	05/23/2016	DATE
PRINTED BY: Scotik Jun. 14, 2016		PROJ. ENGR	DATE	DATE
PORT ADDRESS: ONE SITCUM PLAZA		TACOMA, WA 98401-1837		
CROSS ENGINEERS, INC.		BY: SJK	DATE: 6/14/16	DATE
1800 1st Avenue Tacoma, WA 98406 info@crossengineers.com		REVISION: ADDENDUM #1	APPR: GLW	DATE: 6/14/16
Port of Tacoma P.O. BOX 1837 TACOMA, WA 98401-1837		CROSS ENGINEERS, INC.		



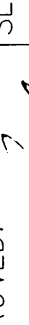
THIS DRAWING IS THE PROPERTY OF THE PORT OF TACOMA AND SHALL NOT BE USED ON OTHER WORK, DISCLOSED, COPIED, IN WHOLE OR IN PART, WITHOUT WRITTEN PERMISSION



B **TYPICAL CONDUIT TRENCHING**
E2.0 NOT TO SCALE

- ### **ELECTRICAL NOTES:**

PROVIDE HANDLE TIES FOR ALL MULTI-CIRCUIT HOMERUNS SHARING A NEUTRAL PER THE NATIONAL ELECTRIC CODE ARTICLE 210.4 MULTIWIRE BRANCH CIRCUITS, PART (B) DISCONNECTING MEANS. DRAWINGS ARE DIAGRAMMATIC. WHERE THE CONTRACTOR MODIFIES THE CIRCUITING, THE CONTRACTOR SHALL PROVIDE AN INDIVIDUAL NEUTRAL PER CIRCUIT, MULTI-POLE CIRCUIT BREAKERS OR CIRCUIT BREAKER HANDLE TIE TO MEET THE NEC ARTICLE. ALL COSTS ASSOCIATED WITH MODIFICATIONS SHALL BE INCLUDED IN THE CONTRACTOR'S BID.

<div style="text-align: center;"> 6556 E2.0 SHEET 40 OF 53 </div>	PCT TRUCK STAGING								APPROVED: 		SLH	05/23/2016
	PCT SOUTH GATE ELECTRICAL PLANT ELECTRICAL DETAILS										GLW	05/23/2016
									DIRECTOR ENG. DATE:	PROJ.	ENGR.	DATE
									PRINTED BY:	Scott K. Jun 14, 2016		
									PORT ADDRESS: ONE SITCUM PLAZA			
									TACOMA, WA 98401-1837			
M. ID:	DRAWING SCALE: AS NOTED											
DAT-HRZ:	TOWNSHIP: 20N								RANGE: 03E	SECTION: 01		
DAT-VERT:	VERT.											

NO REPRODUCING OR TRANSMITTING IN ANY FORM OR BY ANY MEANS, ELECTRONIC OR MECHANICAL, INCLUDING PHOTOCOPYING, RECORDING, OR BY ANY INFORMATION STORAGE AND RETRIEVAL SYSTEM, WITHOUT WRITTEN PERMISSION FROM THE PUBLISHER.

IF SHEET IS LESS THAN 22" x 34" IT IS A
REDUCED SET

